

Lift table: UXB16-10/10

Powerful, flexible and robust

The new UXB lifting table won't let you down



The muscle power and flexibility of our new UXB table will help you drive material flow and improve factory or warehouse efficiency. Built with top-quality components to ensure reliability and safety, it takes the strain out of heavy lifting, and its robust construction guarantees you decades of trouble-free operation.

Maxima lift table UXB16-10/10



Type:	UXB16-10/10
Lifting capacity	1600 kg
Lift travel	1000 mm
Pallet size	1000, 800x1200 mm
Closed height over rollers	85 mm
Total closed height	225 mm*
Pallet opening width	1100 mm
Total width at motor	2250 mm
Width between rollers	600 mm
Total length	1775 mm
Roller diameter	63 mm
Roller partition	140 mm
Transport speed	12 m/min
Motor power conveyor	0.55 kW
Lifting time	15 s
Motor power lift table	3.9 kW 20% ED
Weight, kg	1080 kg
	*incl motor 458 mm

Flexible – fits line heights up to 1000mm; accommodates whole or half standard EU pallets

Speed – powerful motor operates at 12m/s, even at 1600kg (full load)

Safe production 24/7 – compliant with EN-1570-1 (CE-marked), ISO 45001 and other international safety standards

Ergonomics – fully automatic solution to prevent operator back injuries

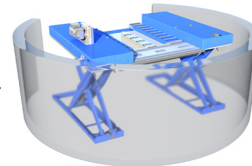
Reliable - heavy-duty design, combines innovative parts with proven products to maximize service life

Safety and health

The UXB's robust, long-life design prevents movement that might cause injury. The aluminium profile safety frame protects hands and feet against becoming trapped. In the unlikely event of a hose failure, valves inside the cylinders immediately stop downward movement to prevent injury. The compact hydraulic unit has an IP55 motor with overheat protection. The hydraulic pump has a pressure-relief valve that avoids the risk of damage to the UXB if it is overloaded. Safety props ensure total safety during service and maintenance.

Standards and directives

All tables are designed and manufactured in conformity with the relevant provisions of the Machinery Directive 2006/42/EC, Annex IIA and in accordance with the Low Voltage Directive, 2006/95/EC and the EMC Directive, 2004/108/EC. All relevant parts of the following European harmonized standards have been considered EN 1570-1:2011 Lifting Tables EN 60204-1 Safety of Machinery - Electrical Equipment of Machines -General Requirements



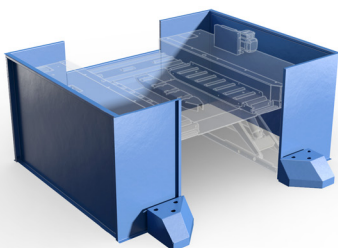
Installation and maintenance

The compact UXB saves time at every stage, with all parts easily accessible. Lifting eyes provide quick and precise positioning, and no pit is required. The oil tank has a gauge that makes it easy to read the level. The wear strips and anodized axles and bushes are easily replaceable to simplify service.

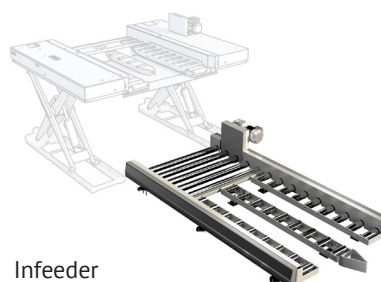
Comprehensive accessories program

- Infeeder eliminates downtime during high-speed line feeding/loading
- Safety barriers provide maximum protection for people, goods and machinery, even in collisions with trucks
- Separate high-efficiency oil cooler enables high-duty operation
- Positioning sensors ensure trouble-free operation
- Frequency converter maintains perfect flow at different conveyor speeds

Health and safety lie at the core of our business. They always have and always will. Everything else flows from this – the durability of our products to give you years of safe, trouble-free operation; the flexibility of our solutions and services that allow you to focus on your core business; the spirit of innovation that constantly drives us forward. Our whole range is designed to keep your operations running smoothly and your people active and safe.



Safety barriers



Infeeder



Jihab Sales AB
Helsingborgsvägen 52
262 72 Ängelholm
Tel +46-431 139 90
www.jihab.com